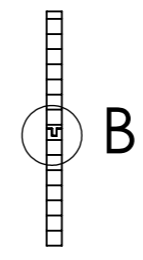
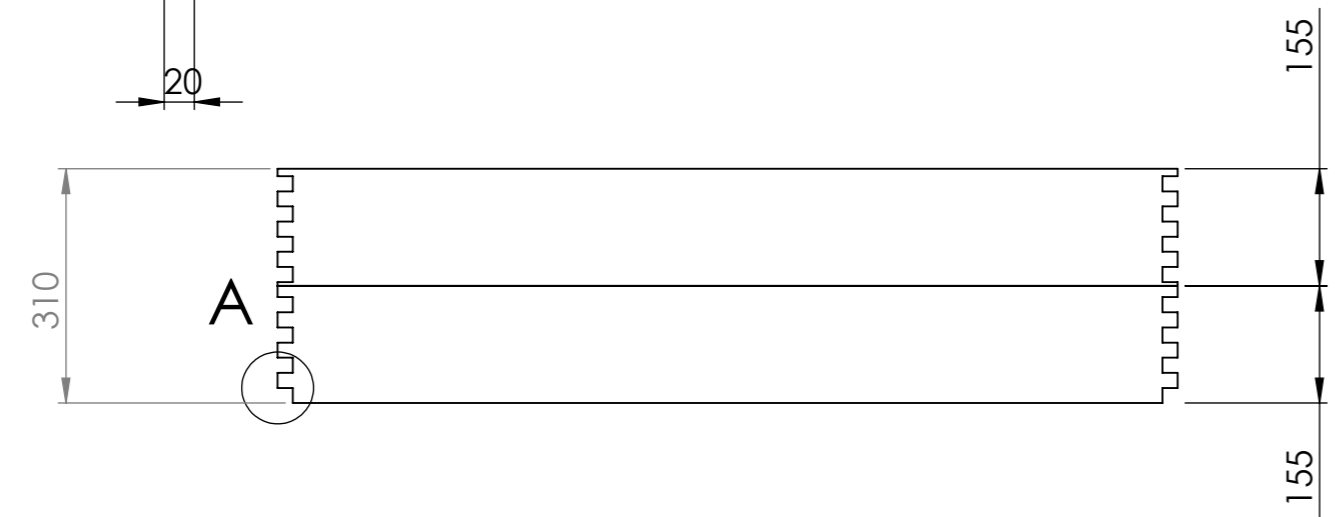
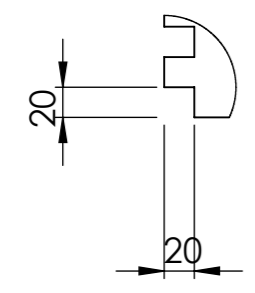
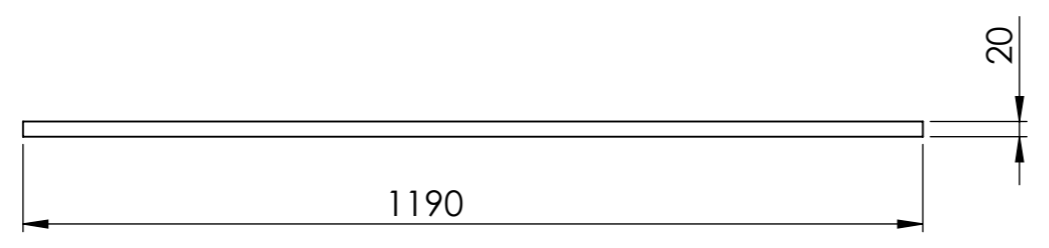
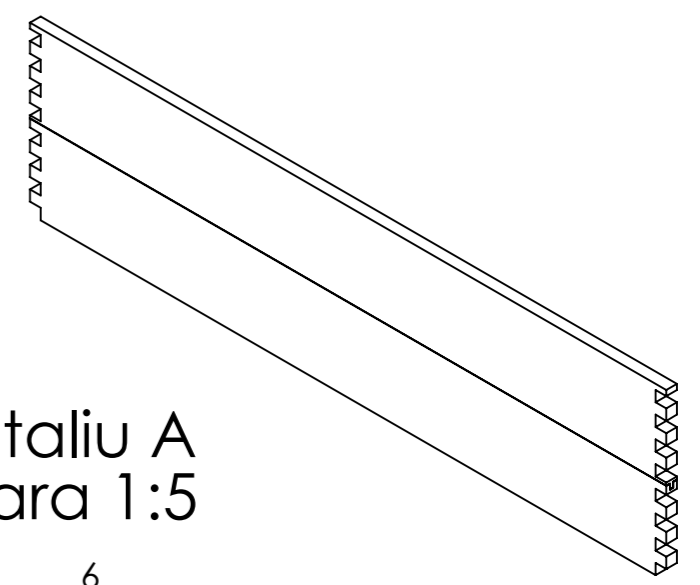
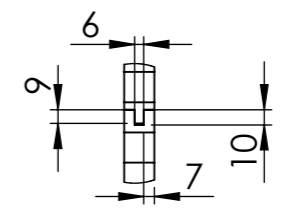


Detaliu A  
Scara 1:5



Detaliu A  
Scara 1:5



NOTA :

1. Scandurile se rostuiesc in coada de randunica Detaliu A, pentru a se fixa de peretii laterali cu clei
2. Scandurile se imbrina conform Detaliu B si se lipesc cu clei
3. Latimea scandurii la exterior minim 80mm, la interior min 60mm

Proiectat	Necsa I.		
Desenat	Necsa I.		
Verificat	Pop L.		
Contr.STAS	Cernea E.		
Aprobat	Pop L.		
		Masa neta:	
<b>F.A.CUGIR</b>		Scara:	<b>D_A_Fata1</b>
		1 : 10	
		Data: 28.09.15	