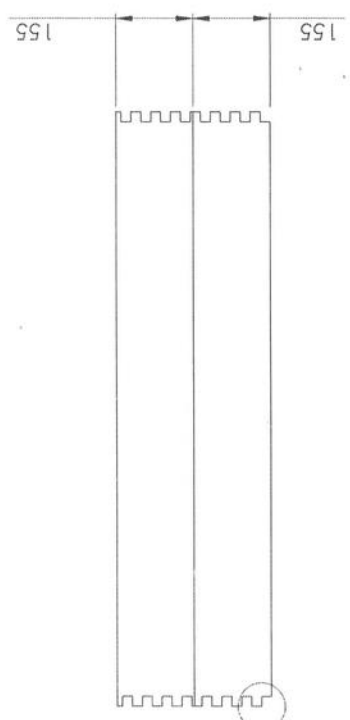
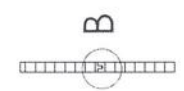
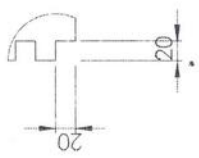
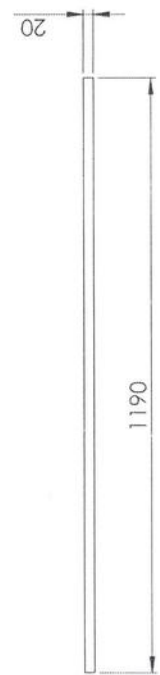
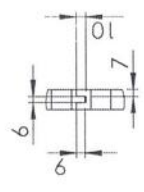


NECLASIFICAT

Detaliu A
Scara 1:5



Detaliu A
Scara 1:5



*si capete
si coarza*

NOTA :

1. Scandurile se rostuesc in coada de randunica Detaliu A, pentru a se fixa de peretii laterali cu clei
2. Scandurile se imbrina conform Detaliu B si se lipesc cu clei
3. Latimea scandurii la exterior minim 80mm, la interior min 60mm

Proiectat Necsa I.
Desenat Necsa I.
Verificat Pop L.
Confr. STAS Cernea E.
Aprobata Pop L.

Masa neta:

Scara: 1:10

Data: 26.09.15

F.A.CUGIR

D_A_Fata1

