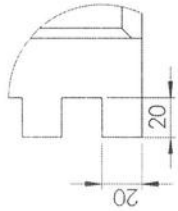
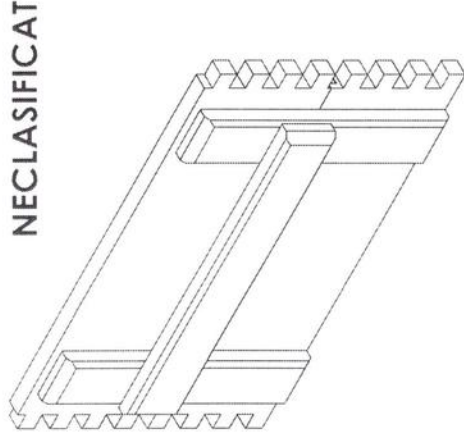
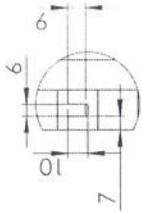


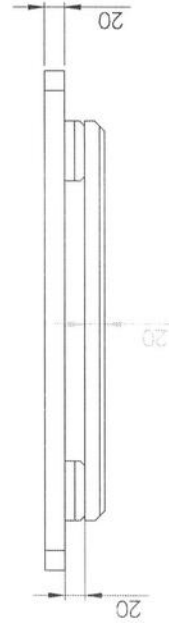
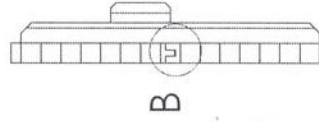
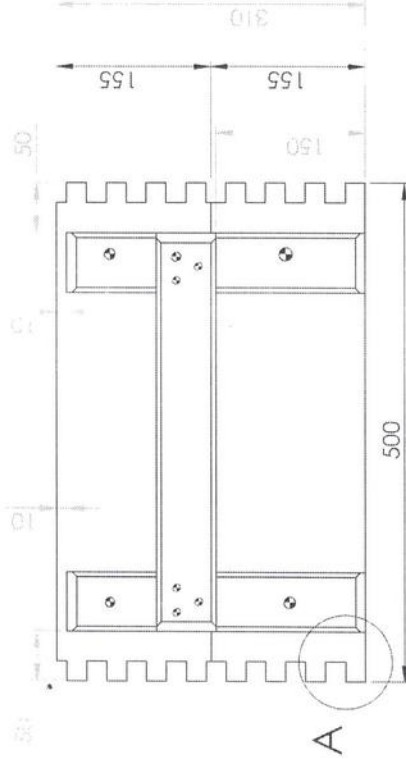
8 Detaliu A  
Scara 1:2



5 Detaliu B  
Scara 1:2



NECLASIFICAT



"copacii"  
cf. de orșeză la

NOTA :

1. Scandurile se rostuesc in coada de randunica Detaliu A, si se fixeaza de peretii fata-spate prin lipire cu clei
2. Scandurile se imbrina conform Detaliu B si se lipesc cu clei
3. Latimea scandurii la exterior minim 80mm, la interior min 60mm
4. Manerul orizontal, vertical se va fixa de peretele lateral cu cuie 4x80 ( ) care se indoie la interior

Proiectat Necsa I.  
Desenat Necsa I.  
Verificat Pop L.  
Contr.STAS Cernea E.  
Acrobat Pop L.

Masa neta:

Scara: 1 : 5

Data: 28.09.15

F.A.CUGIR

D\_A\_Lateral1

F 1 2 3 4 5 6 7 8

E D C B A