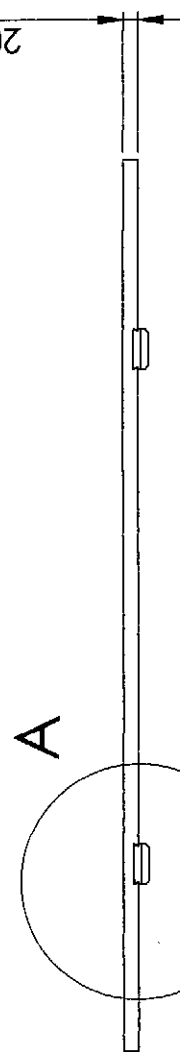
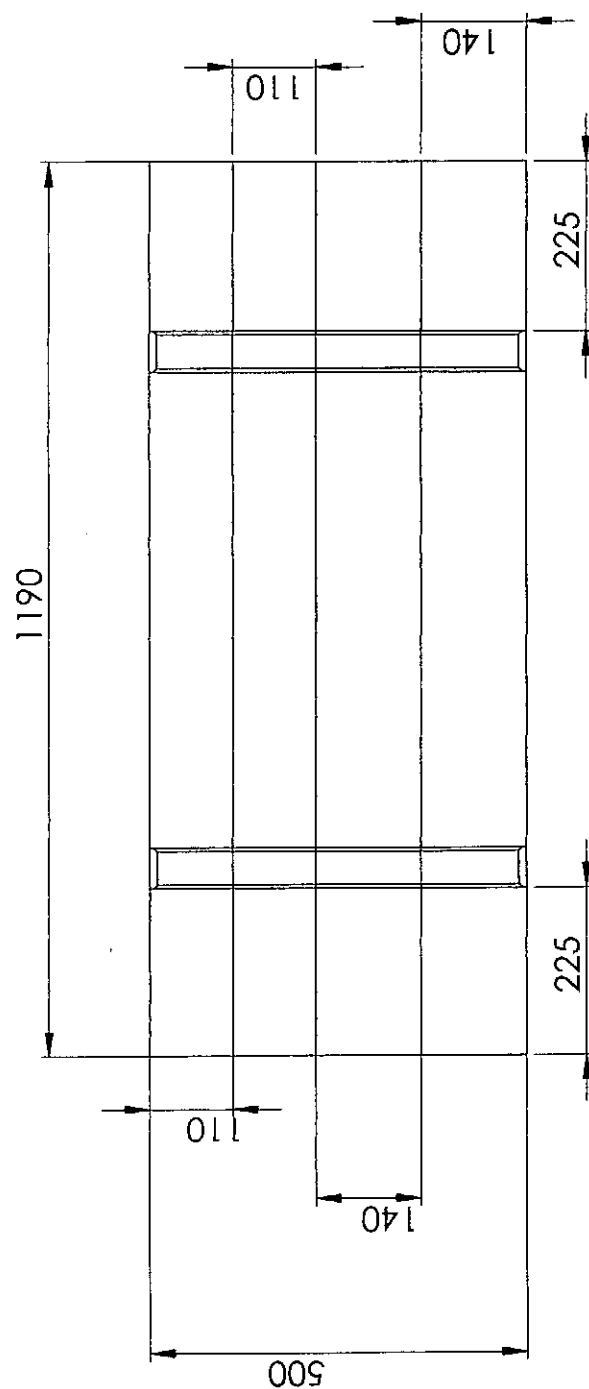
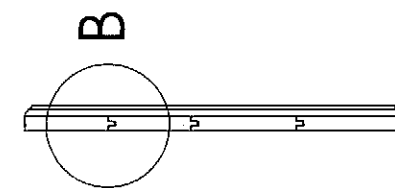
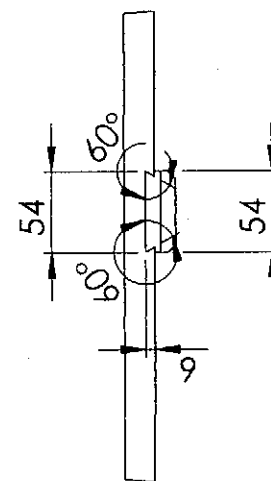


NECLASIFICAT



Detaliu A
Scara 1:5



1. Talpa se monteaza pe fund prin coada de randunica Detaliu A ,se lipeste cu clei si se fixeaza din interior cu 4 holsuruburi 4x35 EN 14592
2. Scandurile se imbina conform Detaliu B si se lipeesc cu clei
3. Latimea scanurii la exterior minim 80mm, la interior min 60mm

[illegible]

F.A.CUGIR

Scara:
1:10

Data: 28.09.15